

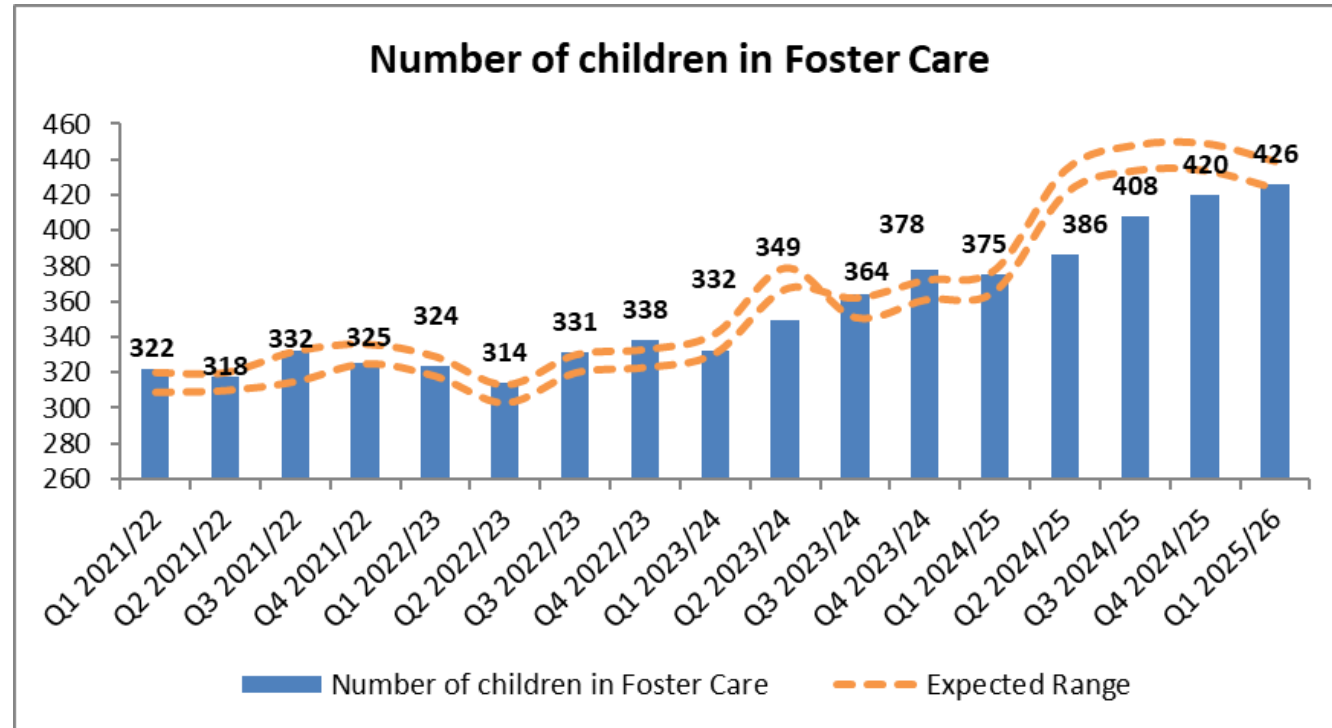


# Fostering North Yorkshire

CYPS Scrutiny Committee Update – September 2025

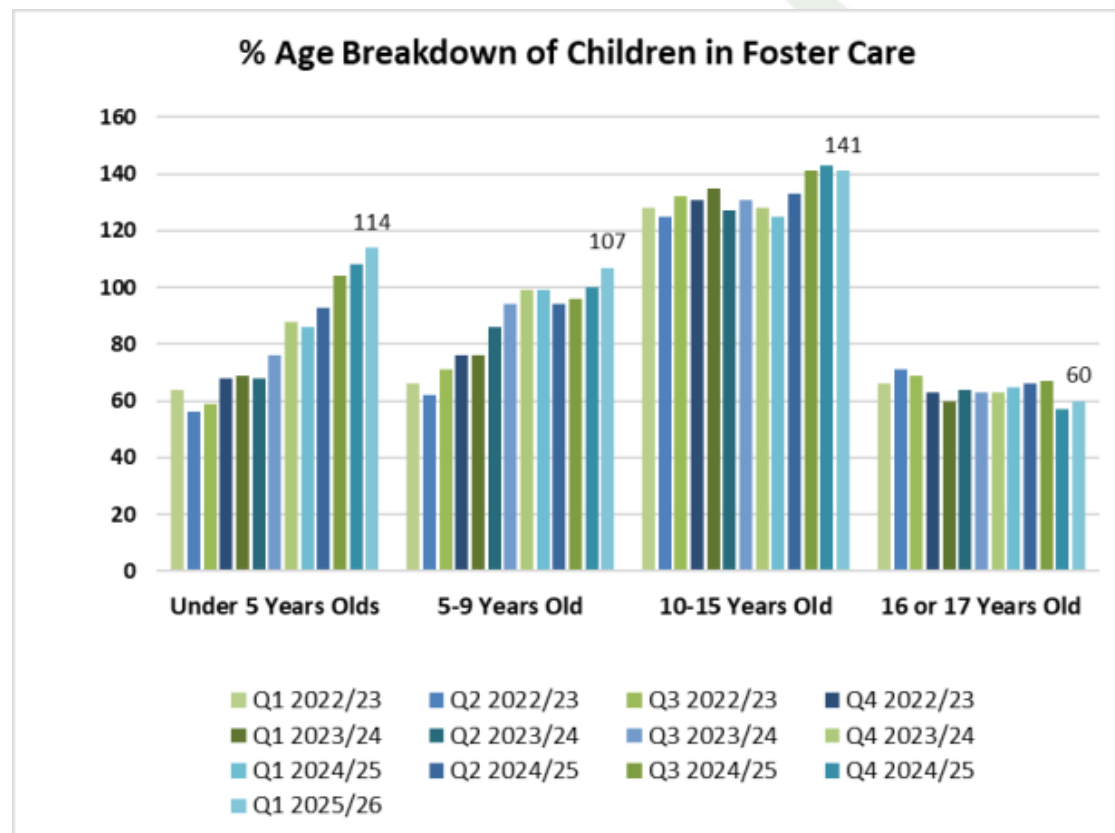
# Children living in foster care

- There are more children living in foster care now than we have seen over the last decade, up 6% in the UK (2023), 75% of all children in care in North Yorkshire.
- 11 living in IFA (Independent Fostering Agency) fostering arrangements. Therefore, 415 (97.4%) are living in North Yorkshire foster homes.
- Overall, more children in a lower number of Fostering Households – so more multi occupied households etc.



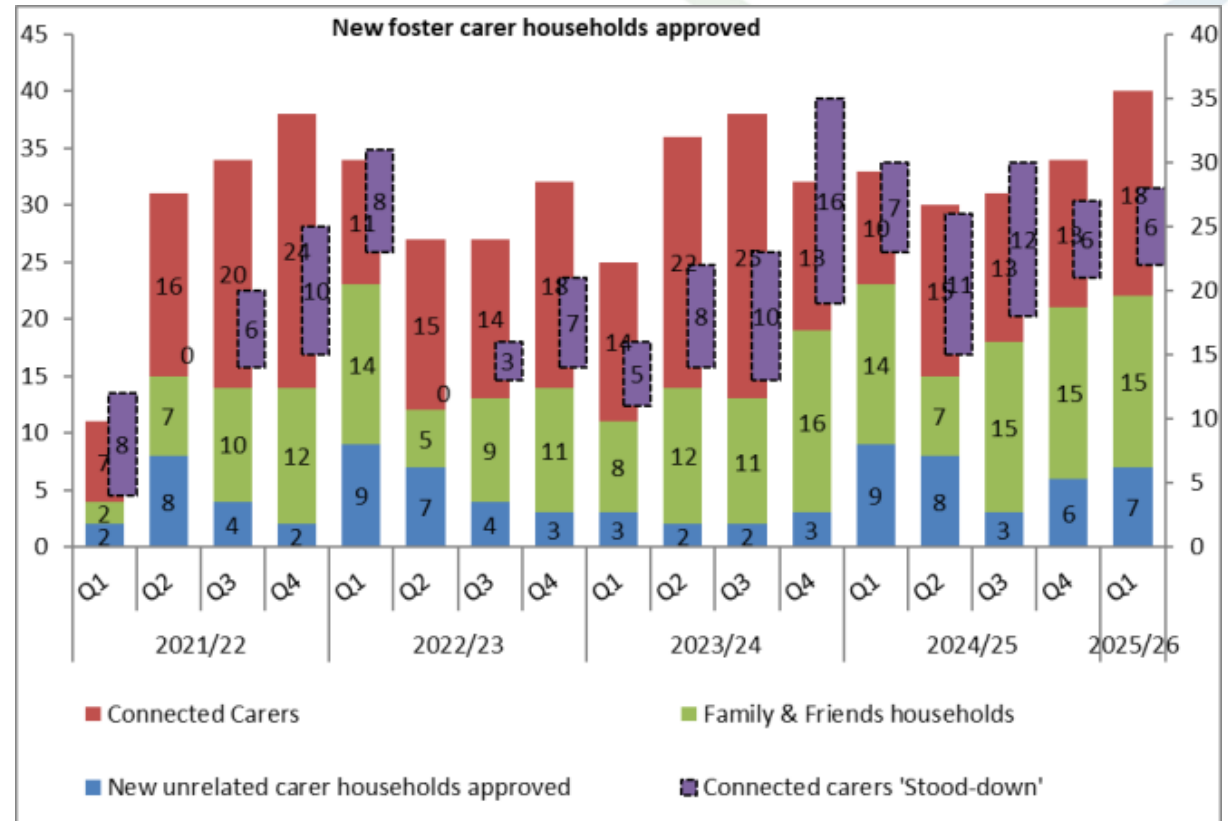
# Age profile of children living in foster care

- Increases in under 5's, 5-9 and 10-15 year olds.
- Only decrease seen in 16 or 17 year olds.



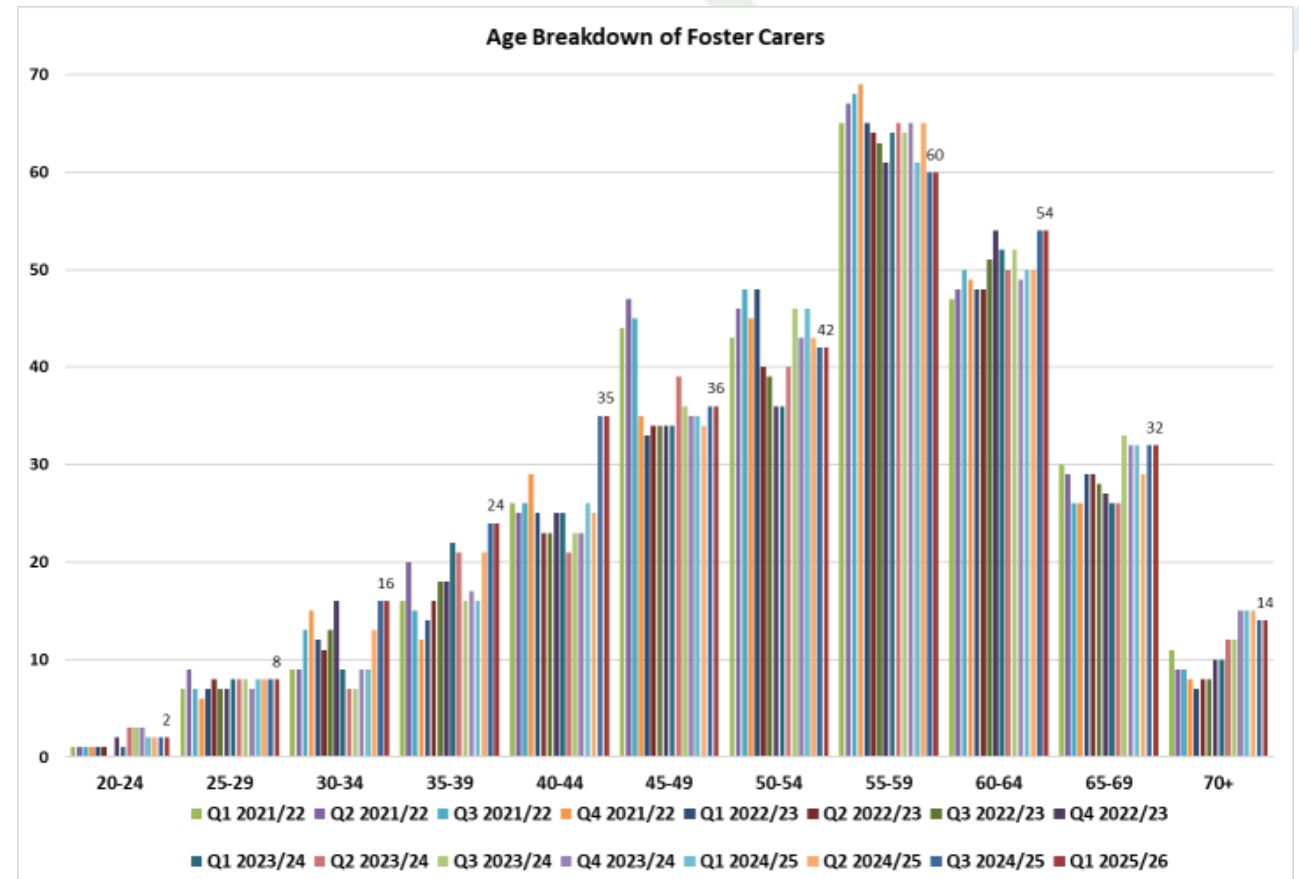
# New foster carer approvals

- We have seen a decreasing number of new unrelated carer approvals since the pandemic.
- However, more children are living with their families under connected carers temporary approvals and then becoming family and friend foster carers at full approval.
- This is in line with our practice model.



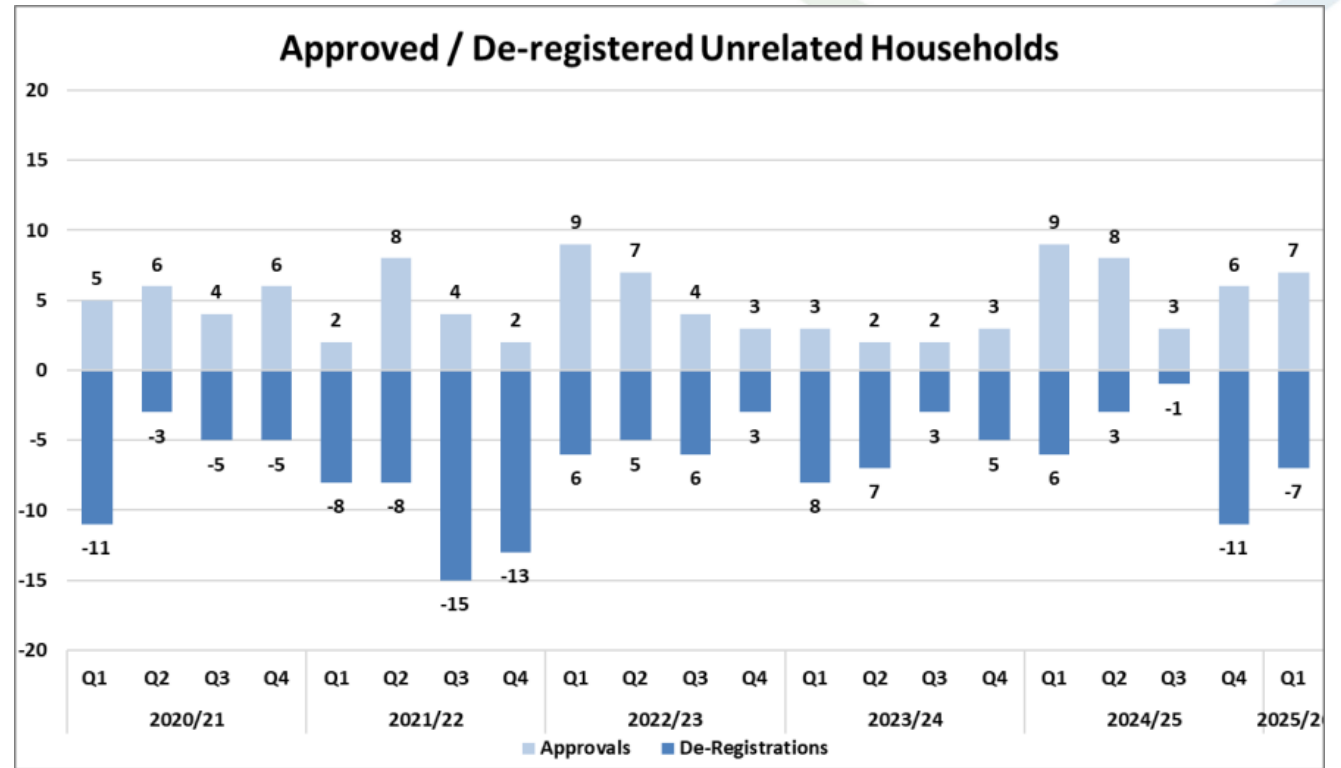
# Age profile of foster carers

- The graph shows all foster carers (i.e. family and friend foster carers and unrelated foster carers).
- 55-59 has always been the largest cohort for both unrelated and family friend carers.
- 45-49 (36 carers) and 50-54 (42 carers) continue to remain stable. This will help when the older carers decide to retire.



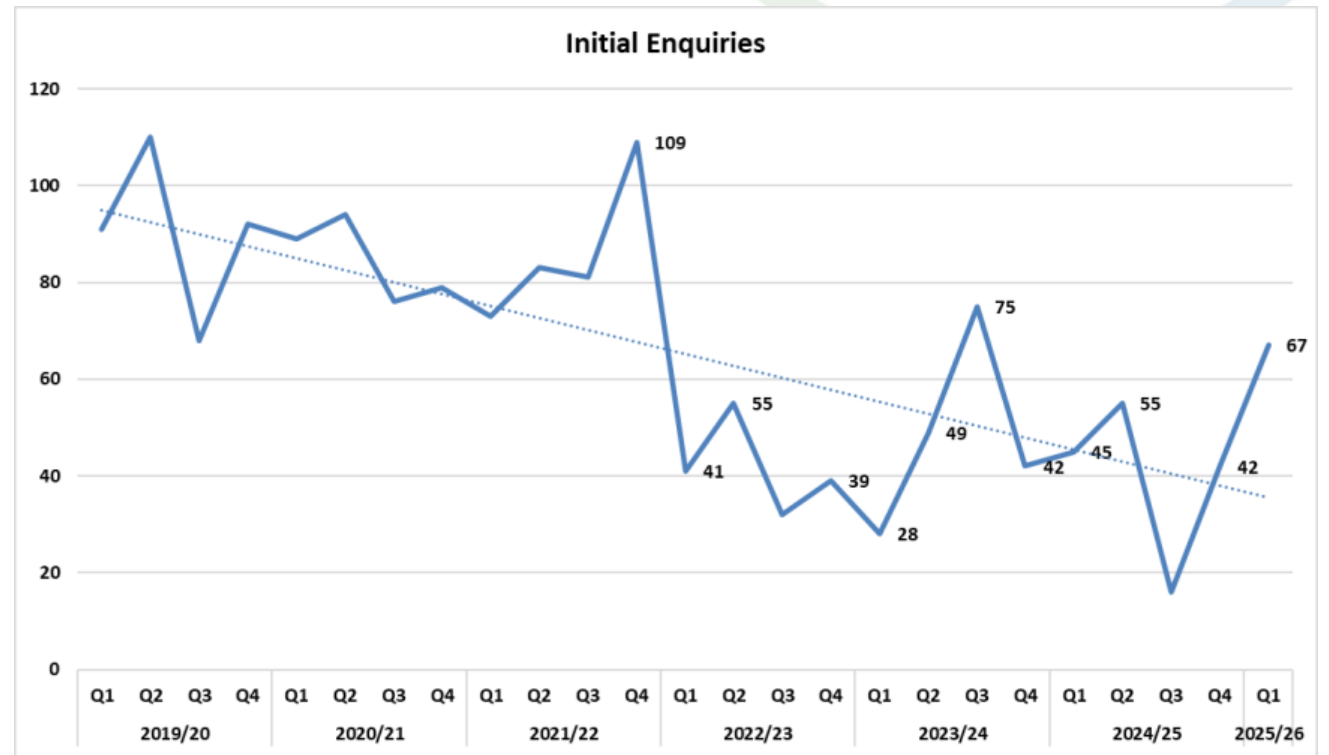
# Unrelated de registrations

- It is encouraging to see approvals now stabilising and coming back in line with pre-pandemic approval rates. During 23/24 we saw a decrease in the number of approvals post pandemic.
- Pleasingly in 24/25 there were more approvals than deregistration's, 24 deregistered and 26 approvals



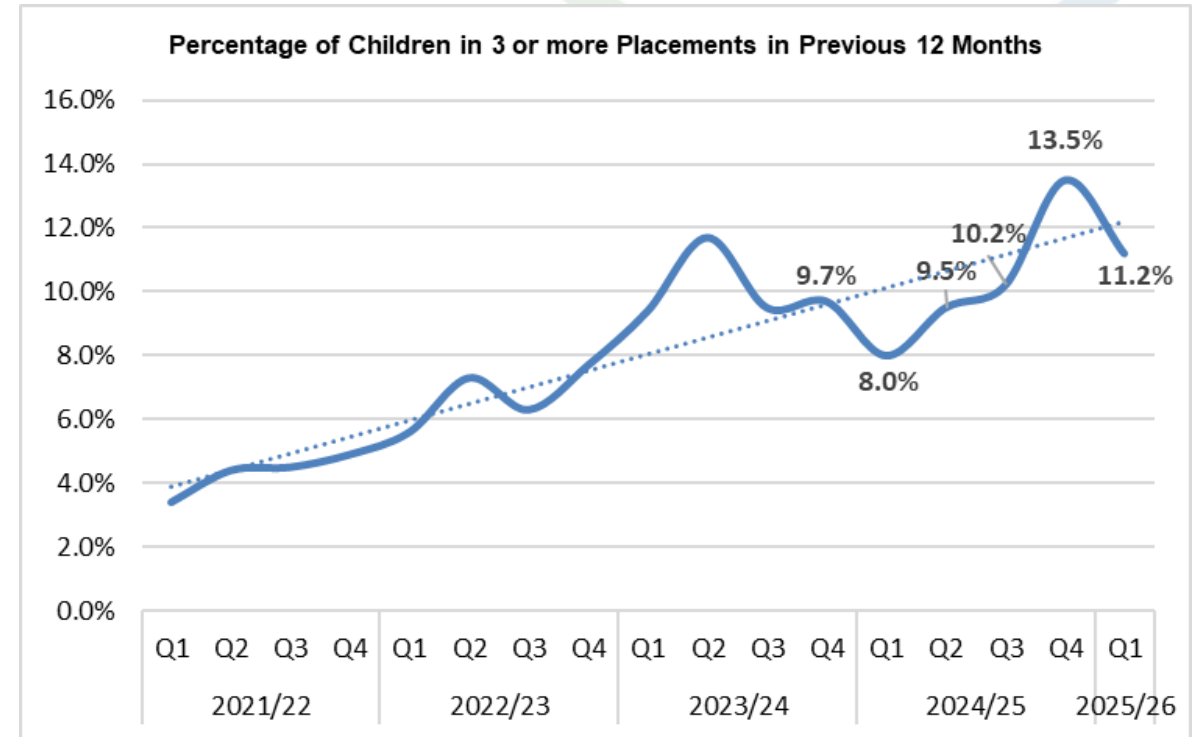
# New unrelated enquiries

- Enquires have improved significantly at the end of Q1 2025/26 to 67 enquires.



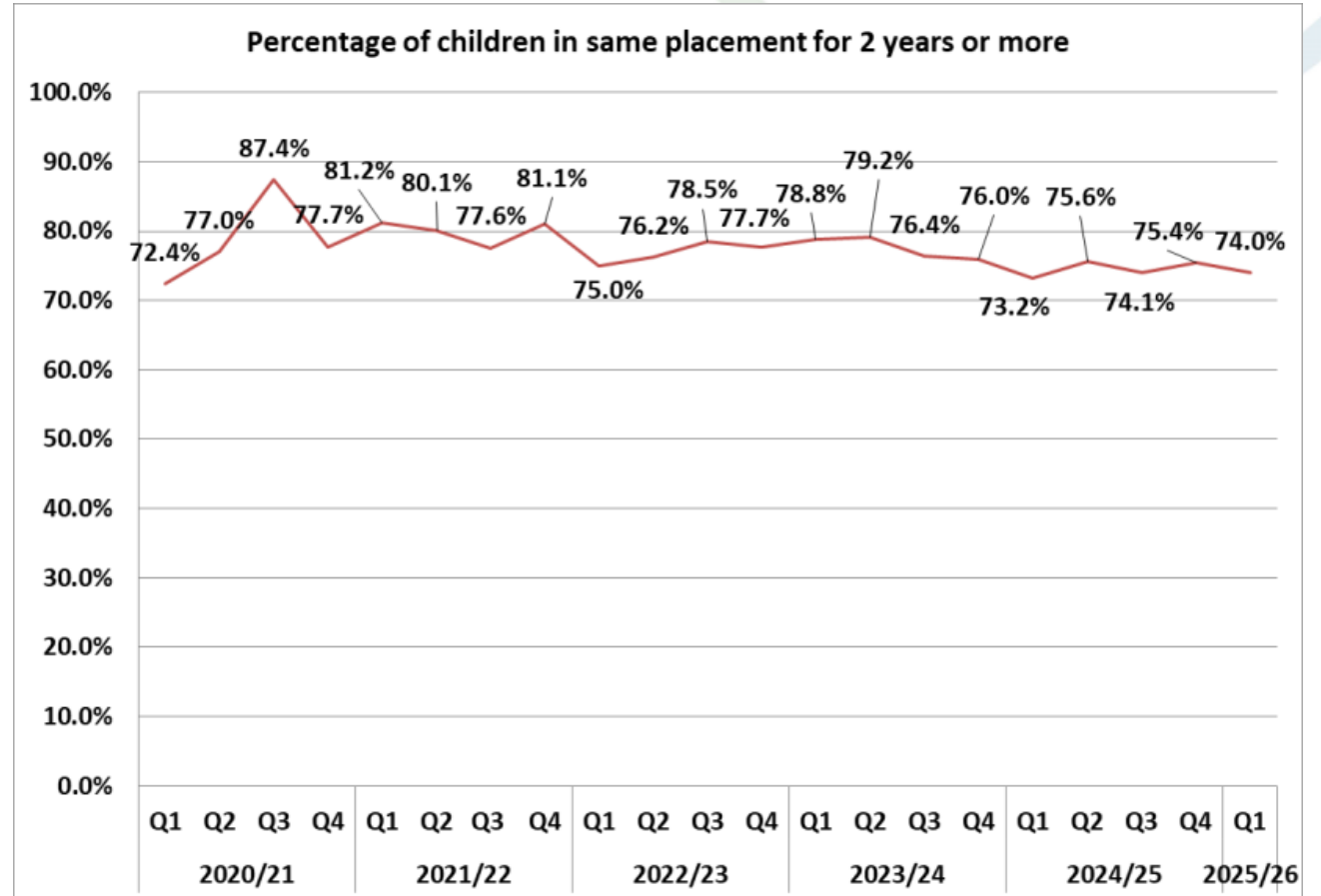
# Increasing short term instability

- There are some children that present a challenge in finding a foster home match for – over the last five years this cohort has increased from 10 to 50 (an increase of approx. 3% to 11% of the children living in foster care) – we know children have faced adversity and needs have increased significantly, the current demand of increased numbers of children entering care have also contributed to an increase in children in 3 or more placements in 12 months. However, pleasingly at the end of Q1 2025/26 we have seen an improvement to short term placement stability for children in North Yorkshire care.



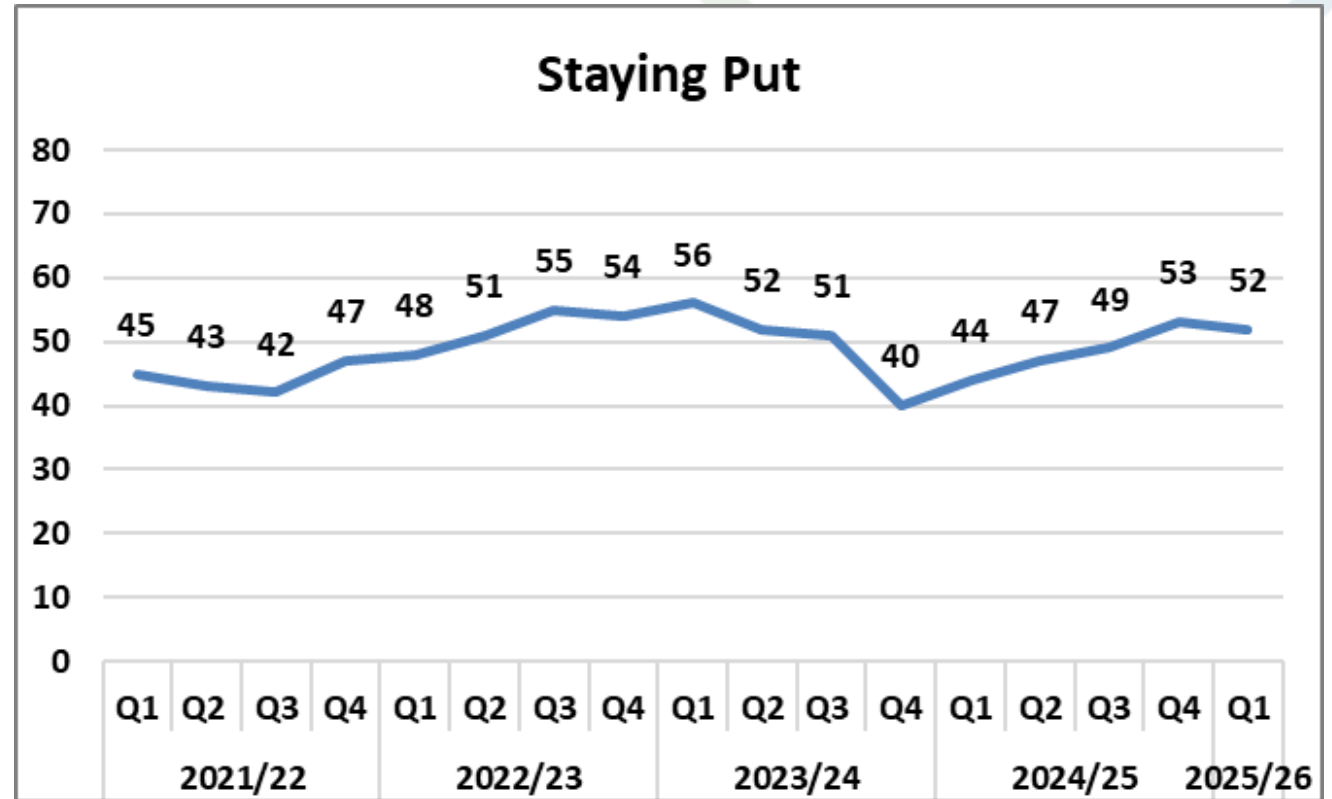
# Stable long term stability

- Long term stability improved during the pandemic due to children unable to move carers.
- Currently the percentage remains stable with a slight decrease from 75% at Q4 2-24/25, at the end of Q1 2025/26 74% children living in foster homes are in stable long term arrangements which is very positive.



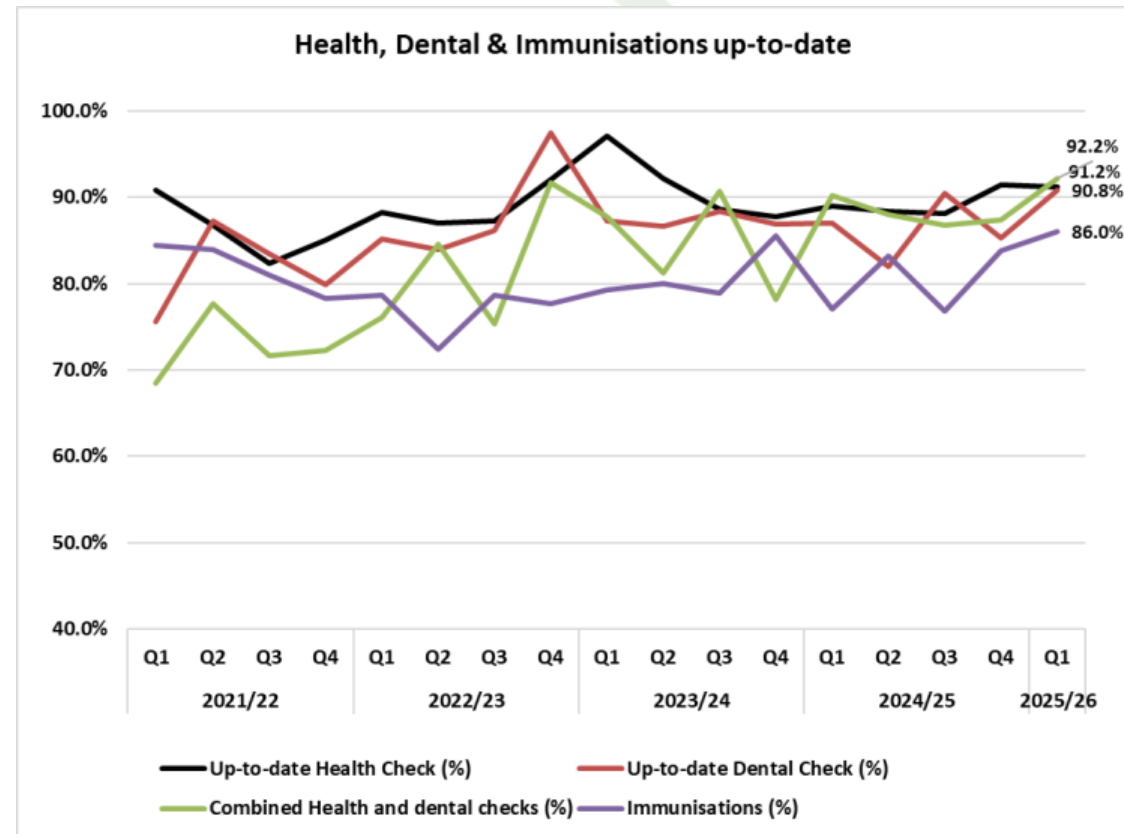
# Staying put

- Staying put is when a child in care who has become 18 remains living with their former foster carer – it is a great outcome and supports several young adults studying at University or going on into training or employment.
- This can reduce the fostering capacity for those families for new children becoming looked after.



# Strong performance re Health and Dental

- This strong performance is good news for children in care. This is a shared responsibility by the fostering service, children's social work teams and health colleagues. With Health, Dental both exceeding 90%, higher than national rates and statistical neighbours.
- The large dip in performance was during the Lockdowns for the COVID-19 pandemic.



# Strong Performance - SDQs and PEPs

- SDQs is 'Strengths and Difficulties Questionnaires' and is a means by which the mental health of children is monitored – the actual questionnaire is completed by the foster carer.
- PEPs is 'Personal Education Plans' and this strong performance is very much about the hard work of the virtual school, children's social work team and schools.
- Strong performance in both areas.

